

INTRA LIFT TRUCK PLATFORM OPERATING INSTRUCTIONS

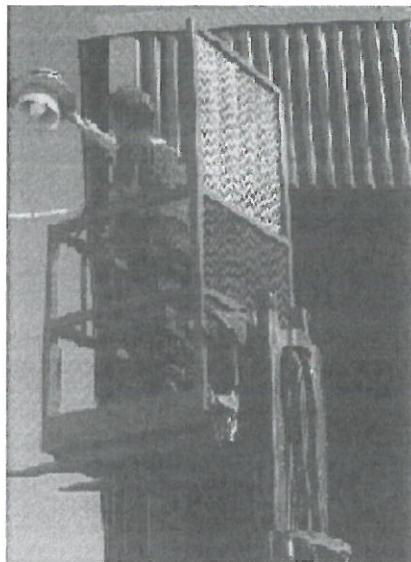
ART. NO:

65010 (1000x1000mm)

65001 (800 x 800 mm)

65002 (800 x 1200 mm)

65003 (1200 x 1200 mm)



EC-Declaration of conformity

Manufacturer:


intra materialhantering ab – Truckvägen 2- SE 231 62 Trelleborg, Sweden

This is to certify that

INTRA LIFT TRUCK PLATFORM

has been manufactured in full conformity with the safety and health regulation laid down by SS 3628/ AFS 1986:24, 1993:1, 1993:59, 1994:48, 1995:2 established for structure and manufacturing of lift truck platforms.

Trelleborg 25.01.2005


Anders Hylén Managing/ Director

CONCISE PRODUCT DESCRIPTION

AN INTRA LIFT PLATFORM IS AN ACCESSORY FOR AN INDUSTRIAL LIFT TRUCK. THIS LIFT TRUCK PLATFORM MAY BE USED ONLY FOR TEMPORARY LIFTING OF ONE OR TWO PERSONS IN ORDER TO CARRY OUT INSPECTION OR MAINTENANCE, AND IT SHALL BE INSTALLED ON TRUCK FORKS.

REQUIREMENTS SET TO LIFTING

THE PERMISSIBLE WEIGHT OF A LOAD PLACED ON A LIFT TRUCK EQUIPPED WITH A PLATFORM, IN THE CASE OF 600 MM CENTRE OF GRAVITY DISTANCE AND THE PERMISSIBLE LIFTING HEIGHT, MUST BE AT LEAST 4 TIMES SMALLER THAN THE PERMISSIBLE TOTAL WEIGHT, SEE THE APPLICABLE MINIMAL LIFTING CAPACITY ON THE MACHINE IDENTIFICATION PLATE.

CHECK AND ENSURE THAT THE LIFTING CAPACITY OF THE LIFT TRUCK AND THE 600 CENTRE OF GRAVITY DISTANCE MATCH THE HEIGHT TO WHICH THE PLATFORM IS LIFTED. SEE THE LIFT TRUCK LIFTING CAPACITY DIAGRAM/ IDENTIFICATION PLATE APPLICABLE TO VARIOUS LIFTING HEIGHTS. INSTALL ON THE LIFT TRUCK A LIMITER, A SIGNAL LAMP OR ANOTHER CLEARLY VISIBLE MAXIMUM LIFTING HEIGHT SIGNAL THAT ASSISTS YOU IN COMPLYING WITH THE LIFTING CAPACITY AND BALANCE REQUIREMENTS.

NB! THE LIFT TRUCK PLATFORM SHALL NOT BE LIFTED ABOVE THE LIFTING CAPACITY LIMIT OF THE LIFT TRUCK.

UNDER NO CIRCUMSTANCES MAY THE LOWERING SPEED EXCEED 0.6 M/S.

THE LIFT TRUCK MUST BE WIDER THAN THE PLATFORM.

THE HORIZONTAL ANGLE OF THE PLATFORM IN MUST NOT EXCEED 10 DEGREES. THE FORKS MUST NOT BE INADVERTENTLY DISCONNECTED. A PLATFORM SHALL NOT BE INSTALLED ON THE LIFTING FORK EXTENSIONS.

OPERATION

WHEN USING THE LIFT TRUCK PLATFORM KEEP IN MIND THE FOLLOWING:

- FORKS MUST BE PLACED IN A HORIZONTAL POSITION
- THE STAND MUST BE VERTICAL
- THE EXTENDABLE STAND MUST BE RETRACTED
- THE EXTENDABLE FORK MUST BE RETRACTED
- IN THE EVENT THAT THE FORKS CAN BE MOVED SIDEWAYS, THE DISTANCE BETWEEN THE FORKS MUST BE AS WIDE AS POSSIBLE IN ORDER TO ALIGN THE CENTRAL LINE OF THE PLATFORM WITH THAT OF THE LIFT TRUCK
- FORKS OF A LIFT WITH ROTATING FORKS MUST BE IN THE DRIVING POSITION
- ONLY THE LEVERS CONTROLLING LIFTING OR LOWERING THE PLATFORM, AS WELL AS MOVING THE TRUCK MAY BE USED
- ON LIFT TRUCKS WITH COUNTERWEIGHTS AND EXTENDABLE STAND THE COTTER PINS MUST BE INSERTED IN THE RELEVANT HOLES OF THE FORK.
- CHECK THAT THE PLATFORM IS PROPERLY ATTACHED TO THE LIFT TRUCK

WHEN THERE IS A PERSON ON THE PLATFORM

- LIFTING OF PEOPLE IS PERMITTED ONLY WHEN THE LIFT TRUCK IS STANDING ON LEVEL GROUND
- BEFORE LIFTING THE TRUCK OPERATOR AND THE PERSON INTENDED TO BE LIFTED MUST ASCERTAIN WHETHER OR NOT THE LIFT TRUCK'S LIFTING CAPACITY MATCHES THE LIFTING HEIGHT, AND WHETHER OR NOT THE LIFT TRUCK IS FUNCTIONING WITHOUT FAIL. MOREOVER, IT IS NECESSARY TO CHECK THE WORKING ORDER OF THE LIFT TRUCK, THE PLATFORM AND THE PLATFORM LOCKING DEVICE, AND TO MAKE SURE THAT THE HORIZONTAL ANGLE OF THE PLATFORM DOES NOT EXCEED 10 DEGREES.
- THE TRUCK OPERATOR MUST BE PRESENT AT ALL TIMES WHEN A PERSON IS BEING LIFTED, AND MUST SEE THE PLATFORM AND THE PERSON THEREIN. IF REQUIRED, THE OPERATOR MUST BE READY TO TAKE IMMEDIATE ACTIONS.
- THE PERSON IN THE PLATFORM MUST BE STANDING.
- THE LIFT TRUCK MUST NOT MOVE, WHEN THE PLATFORM WITH A PERSON IN IT IS LIFTED ABOVE 0.5 M, THE PARKING BRAKE AND THE EXISTING STABILISERS MUST BE SWITCHED ON. HOWEVER, IT IS POSSIBLE TO MOVE THE LIFT TRUCK ON A LOW SPEED, IF IT IS REQUIRED TO ADJUST ITS POSITION.

TESTING / INSPECTION

WE RECOMMEND CARRYING OUT THE FIRST LIFTING AND PLATFORM TESTING OPERATIONS WITH THE PARTICIPATION OF A QUALIFIED ORGANISATION.

THANK YOU FOR READING THESE INSTRUCTIONS, AND FOR BUYING OUR LIFT TRUCK

PLATFORM.